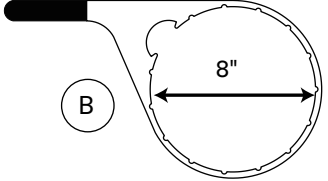
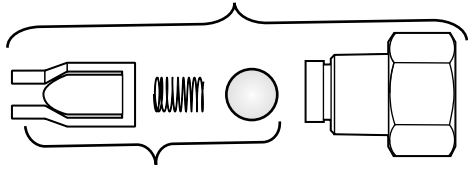
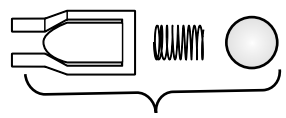
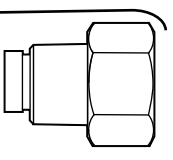
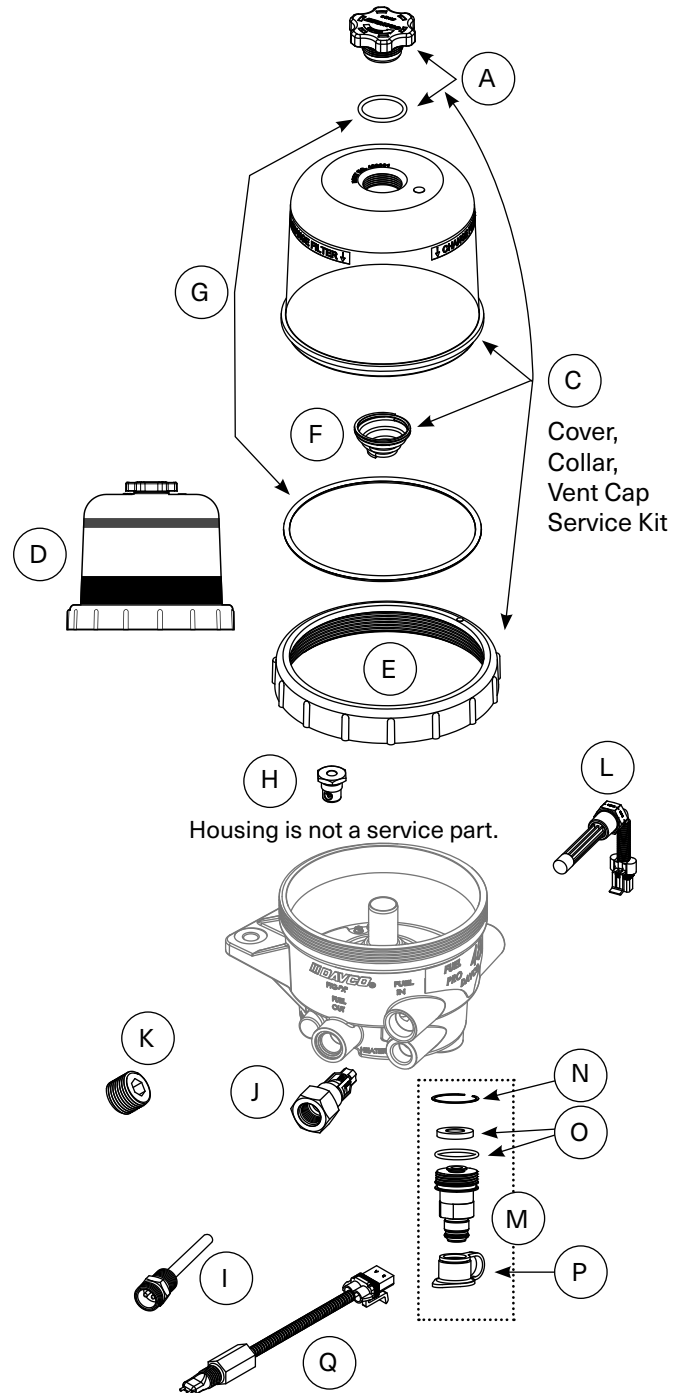


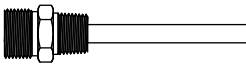
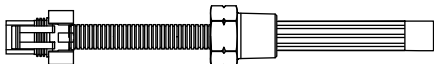
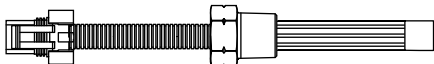
DTNA P/N		DESCRIPTION
A	DVC 240023DAV	Vent Cap Service Kit
B	DVC 482017	Collar Wrench
		
C	DVC 482044	Cover, Collar, Spring, Vent Cap and Vent Cap O-ring (Collar o-ring not included)
D	DVC 482046DAV	Cover with Black Band, Collar, Spring, Vent Cap and Vent Cap O-ring (Collar o-ring not included)
E	DVC 482003	Collar
F	DVC 380056	Filter Spring
G	DVC 482022	O-Ring Service Kit, Vent Cap/Cover
H	DVC 482010SVC	Bypass Valve
I	DVC 102145	120V Overnight Heater
J	DVC 482012	Check Valve Assembly M22
	DVC 101132	Check Valve Service Kit (below)
<p>Check Valve Assembly (with body) P/N DVC 482012</p> 		
		<p>Check Valve Service Kit P/N DVC 101132</p> 
		<p>Check Valve Body</p> 
K	DVC 020909	Plug
L	DVC 103594DAV	PTC Pre-heater 12V-155W Metri Pack (see next page)
	DVC 103528	PTC Pre-heater 12V-195W Metri Pack (see next page)
M	DVC 485022DAV	Quick Connect Drain Valve - Includes: retaining ring (N), both seals (O), protective cap (P), and valve body.
N	DVC 485025DAV	Retaining Ring
O	DVC 485021DAV	Drain Valve Seal Service Kit
P	DVC 102712DAV	Drain Valve Dust Cap
Q	DVC 102770	WIF (see next page)

FILTERS (AVAILABLE THROUGH OEM DISTRIBUTORS)	
A0000905051	DDC
FS20083	Fleetguard



**PARTS ARE AVAILABLE THROUGH
DAIMLER TRUCKS NORTH AMERICA**

**FOR UPDATED INFORMATION,
VISIT WWW.DAVCO.COM**

HEATERS AND WATER-IN-FUEL (WIF) SENSORS		
DVC102145	120VAC 75W Overnight Heater, ½"-14 Threads	
DVC103528	12VDC 195W PTC Pre-heater, Metri-Pack Connector, ½"-14 NPTF Threads, Harness Length 19.81"	
DVC103594	12VDC 155W PTC Pre-heater, Metri-Pack Connector, ½"-14 NPTF Threads, Harness Length 24.50"	
DVC 102770	Two Pin WIF, Metri-Pack Connector, ½"-20 UNF Threads, Harness Length 6.50" (Freightliner)	